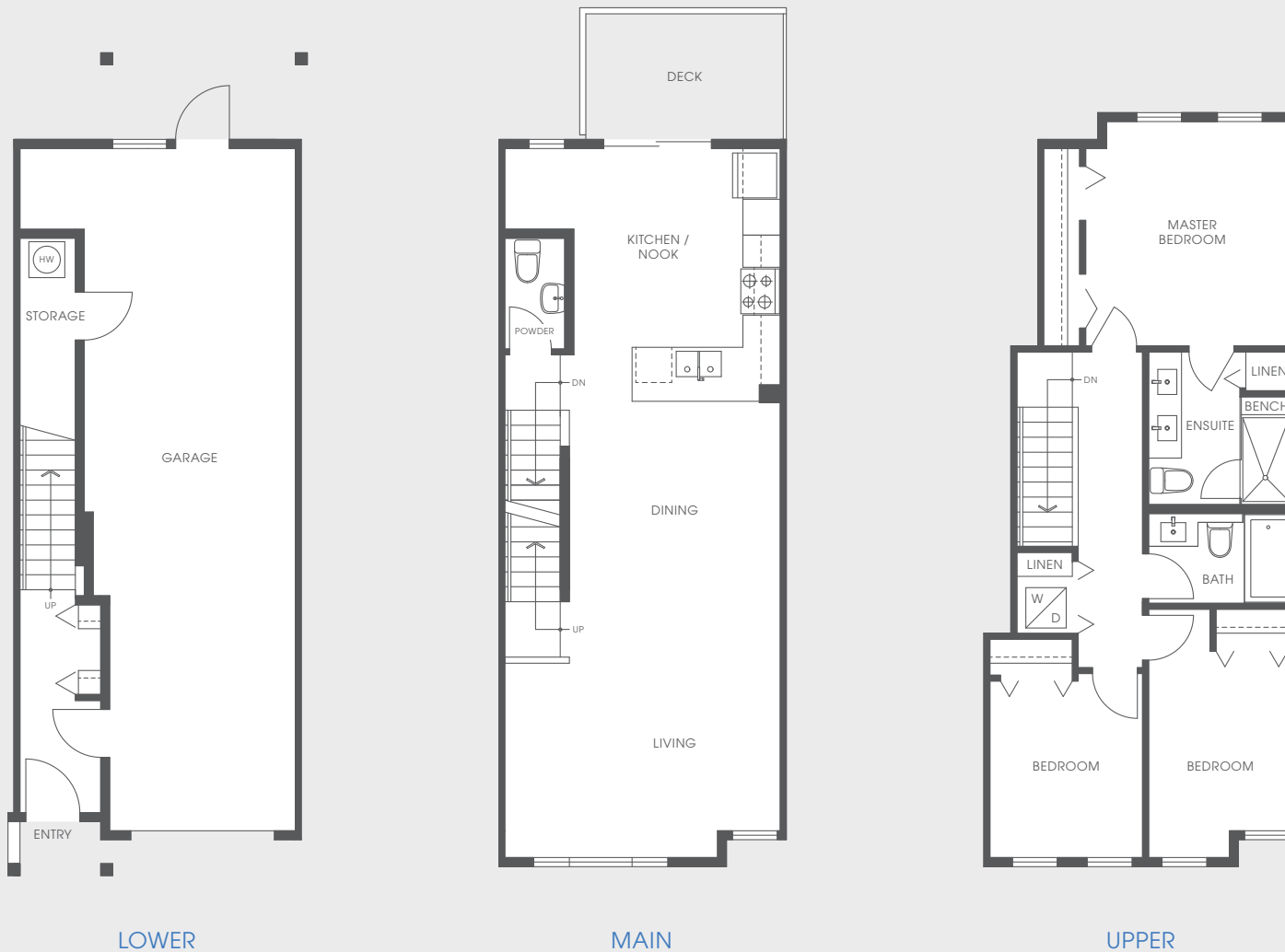


# THE SPINNAKER SERIES | PLAN B1

3 BEDROOM | 2.5 BATH | 1,379 SQ.FT. (APPROX.)



THE DEVELOPER RESERVES THE RIGHT TO MAKE MODIFICATIONS OR SUBSTITUTIONS SHOULD THEY BE NECESSARY. ANY MEASUREMENTS PROVIDED ARE APPROXIMATE ONLY. THE QUALITY RESIDENCES AT FAIRWINDS ARE BUILT BY POLYGON FAIRWINDS HOMES LTD. 08/09/16